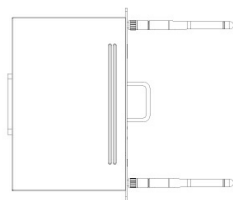


# MCore OPS Installation

## Package Contents

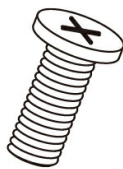
We recommend that you use the accessories provided or approved by Yealink. The use of unapproved third-party accessories may result in poor performance.



MCore OPS (antenna x 2)



Screwdriver



Screw x 2

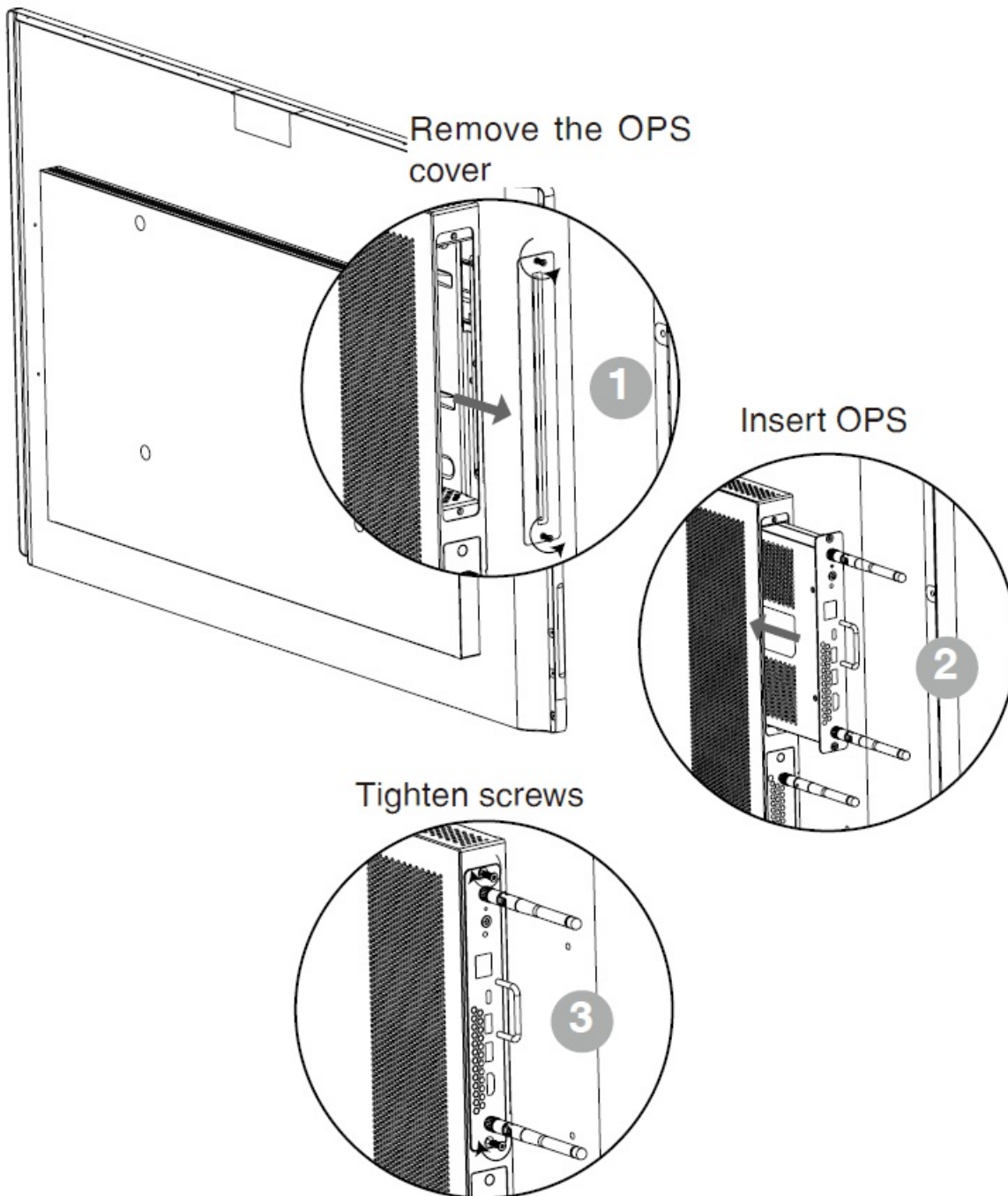


Quick Start Guide

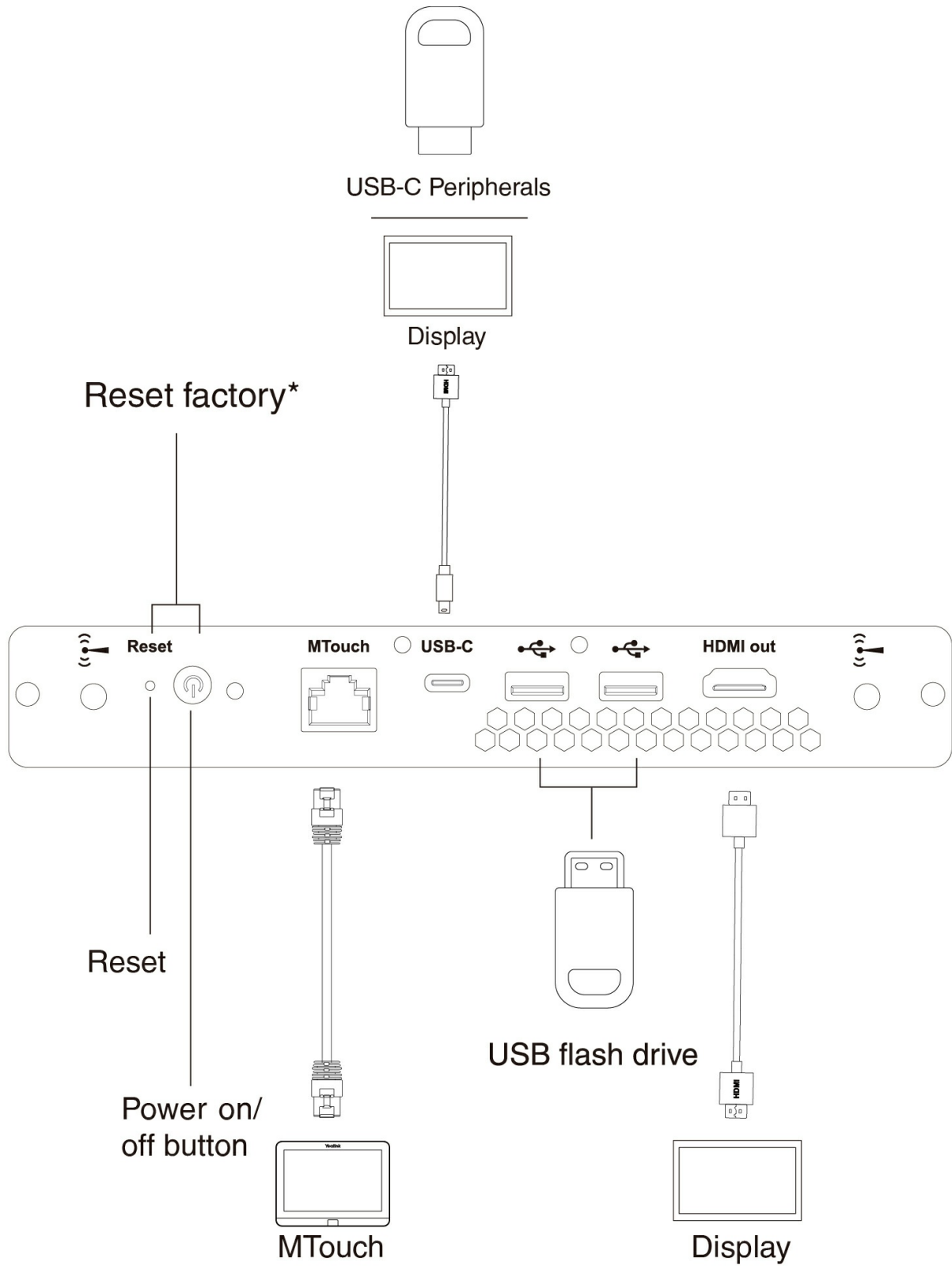
## Installation

### **NOTE**

When installing or uninstalling OPS, ensure the endpoint is powered off. Otherwise, OPS may be abnormal.

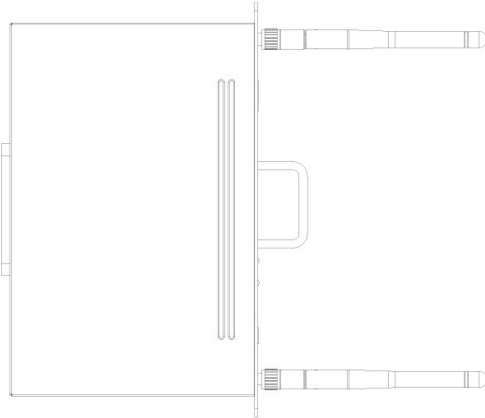


**Hardware Component Instructions**



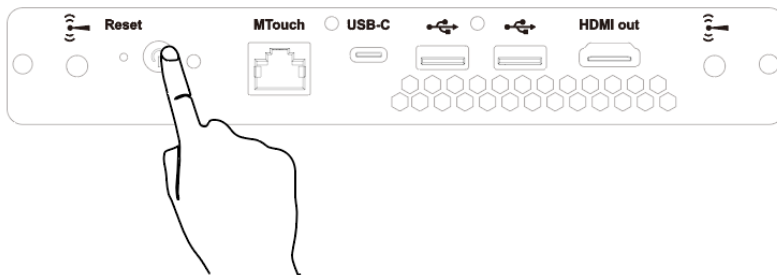
\*When the OPS is powered off, press the power button while pressing the reset key to reset the factory settings.


We recommend placement of the OPS antenna is as follows, with the highest signal strength:



## Power on

1. Press the OPS power button to start OPS after installation completely.



2. Press the switch signal source button  in the lower-right corner of the MeetingBoard.
3. Enter the power-on password, and the power-on password is empty.